

Making Posters with Adobe FrameMaker

J. M. Holt
MIT Haystack Observatory
Westford, Massachusetts

Introduction

This poster presents some hints for using Adobe FrameMaker to make posters. These may provide a starting point for efforts more creative than mine.

This page was designed on 8.5x11 paper with portrait orientation. Body text is 6 pt. When scaled by 400%, the page fits nicely on a standard 36 in ink jet printer, and the text scales to a readable 24 pts.

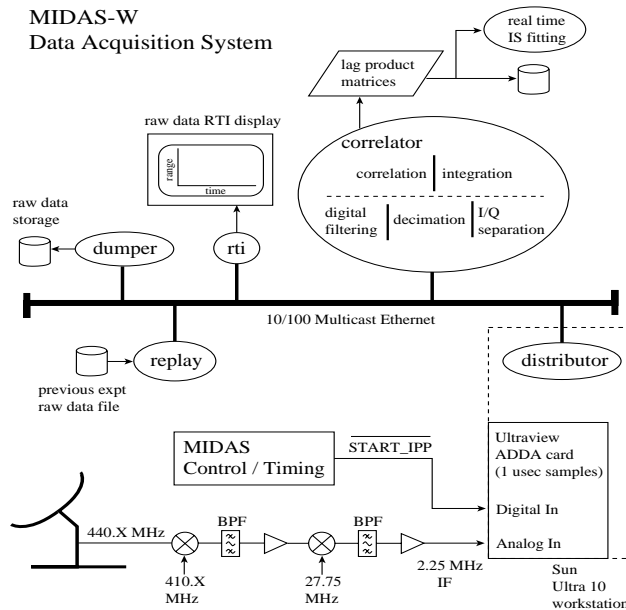
Text is placed in frames, which can be created using the text frame tool in the Graphics-Tools window (the text frame tool looks like a page with text). Click on the tool, use the mouse to draw the frame and click "set" in the popup window. The frame can be moved and resized using the mouse, and other properties can be changed by selecting the frame and clicking the properties button in the Graphics-Tools window.

In addition to standard text in a text frame, you can place graphics text anywhere on the page. This can be done even inside a text frame, which is usually undesirable. To make sure you are inserting regular text, watch the paragraph designer window. If a paragraph type appears, you are inserting regular text with a full array of paragraph properties.

The text frames on this page have been surrounded by rounded rectangles. Many other decorative touches are possible.

This document is available in ~jmh/posterTemplate.fmk

MIDAS-W Data Acquisition System



Encapsulated Postscript Graphics

Encapsulated postscript is an ideal format for imported graphics because it scales nicely when the page is expanded to poster size. The block diagram at the left is an example. If the graphic file is imported by reference, the program which produced it, e.g. Matlab, can be used as an inset editor to do live edits of the graphic.

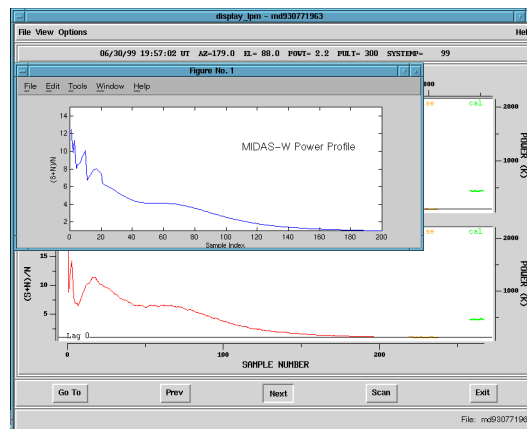
Graphics

There are two ways to add graphics to the page.

- Draw directly on the page. This is how the rounded blue rectangles were added.
- Import a graphics file using the File-Import-File menu. Files can either be copied into the document or imported by reference. The latter is usually best because if the graphic is changed, the new version will automatically appear.

Frames within frames

Frames can be embedded within other frames. For example, small graphics such as this Sun Workstation image can be inserted into a text frame and the text will flow nicely around the image.



Bitmap graphics

Bitmap images, such as the screen dump at the left, can also be imported. Many formats are supported. You will be able to select a dpi value for the graphic. 300 dpi is often a good choice because, when scaled by 400%, it will be approximately the same size as the original screen image.

Preparing the Poster for Printing

When the poster is finished, make a PDF version which can be printed by Heidi at Haystack, or by a printing service such as Kinkos. The Haystack printer is rather old, and the results are distinctly inferior to those produced by a newer printer. Color rendition is worse, text is scaled as a bitmap rather than scaled to a higher point size, and some characters are misprinted.

FrameMaker can print directly to PDF, but the default options introduce undesirable compression. It is better to print to postscript and then use distill to convert the postscript to PDF. Use the following options:

```
distill -colordownsample off -compresstext off -coloracs off posterTemplate.ps
```